



Airways, hila, and mediastinum

The hilum—identification

What will I gain from this video?

After watching this video, you will be able to confidently identify the hila on PA and lateral chest X-rays.

The hilum

Taken from Latin:

- "Depression"
- "Pit"
- "A little something"



Fleishner Society definition:

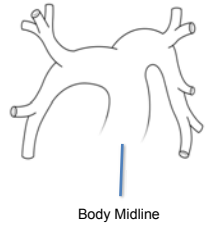
The composite shadow at the root of each lung produced by bronchi, arteries and veins, lymph nodes, nerves, bronchial vessels, and associated alveolar tissue.

Fleishner Society definition:

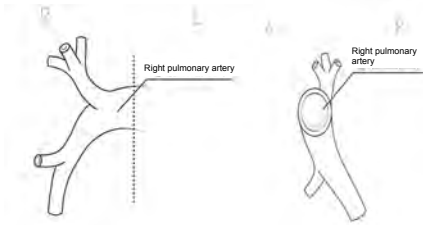
The composite shadow at the root of each lung produced by bronchi, **arteries** and veins, lymph nodes, nerves, bronchial vessels, and associated alveolar tissue.



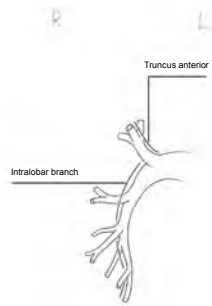
Main pulmonary artery



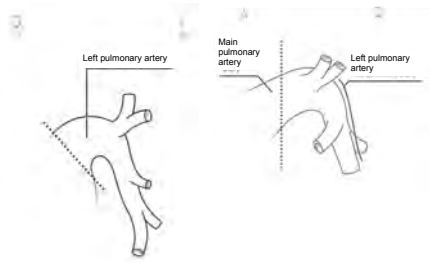
Main pulmonary artery



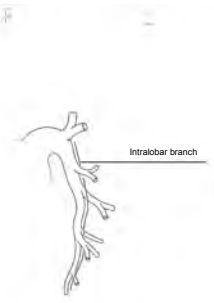
Right pulmonary artery



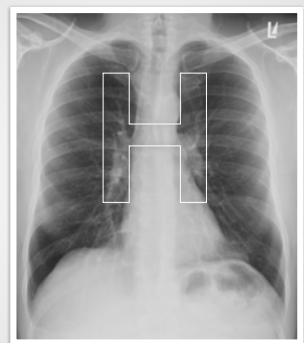
Left pulmonary artery



Left pulmonary artery



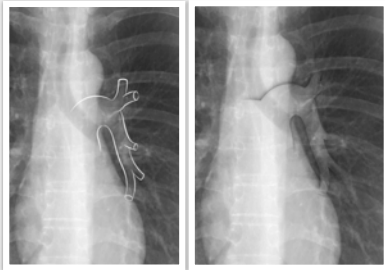
H-sign



Peripheral branches



Left pulmonary artery



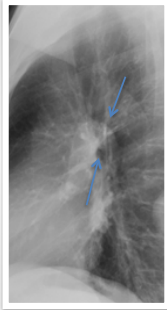
rAnatomy

Left pulmonary artery—PA



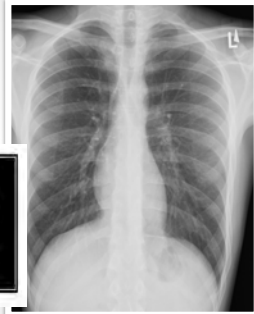
rAnatomy

Left pulmonary artery—LAT



How to identify the LPA on the PA

STEP 1



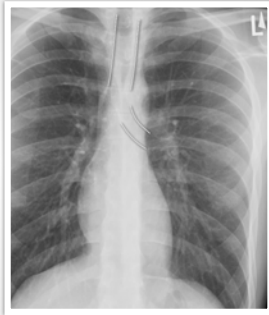
How to identify the LPA on the PA

STEP 2



How to identify the LPA on the PA

STEP 3



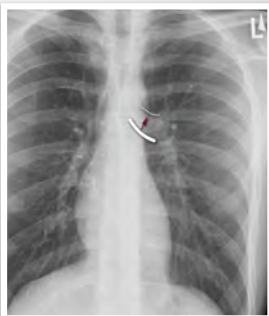
How to identify the LPA on the PA

STEP 4



How to identify the LPA on the PA

STEP 5



rAnatomy

Aorto-pulmonary window



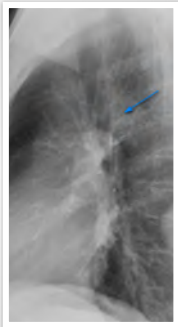
How to identify the LPA on the LAT

STEP 1



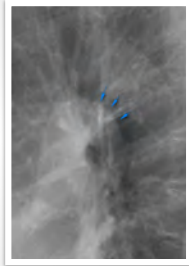
How to identify the LPA on the LAT

STEP 2



How to identify the LPA on the LAT

STEP 3

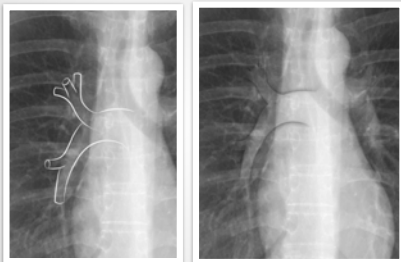


How to identify the LPA on the LAT

STEP 4

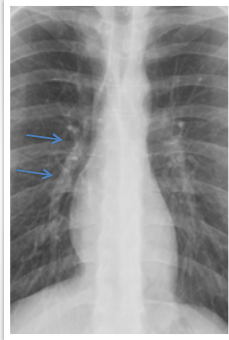


Right pulmonary artery



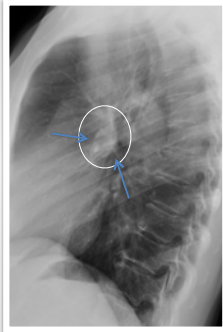
rAnatomy

Right pulmonary artery—PA



rAnatomy

Right pulmonary artery—LAT



How to identify the RPA on the PA

STEP 1



How to identify the RPA on the PA

STEP 2



How to identify the RPA on the PA

STEP 3



How to identify the RPA on the PA

STEP 4



How to identify the RPA on the PA

STEP 5



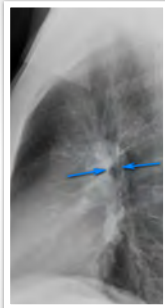
How to identify the RPA on the LAT

STEP 1



How to identify the RPA on the LAT

STEP 2



How to identify the RPA on the LAT

STEP 3



How to identify the RPA on the LAT

STEP 4



Proximal pulmonary arteries form H-shape on frontal X-rays

There are TWO arches on the lateral: the BIG arch formed by the aorta and the LITTLE arch formed by the left pulmonary artery.

The RPA forms a white oval on the lateral X-ray anterior to the airways and is the whitest soft tissue structure on the lateral.

Left hilum higher than right because the left pulmonary artery arches over the left mainstem bronchus.

On the frontal X-ray the superior edge of the left mainstem bronchus is equivalent to the bottom edge of the left pulmonary artery.
